



Ph: 02 6646 6210 Email: info@anchorageholidaypark.com.au Web: www.anchorageholidaypark.com.au

Spa Cabins



Our luxury Cabins feature two decors, Country Cottage and Mediterranean, the latter with a view to the magnificent Clarence River.

The master bedroom contains a queen size bed, bedside tables, dressing table, wardrobe and television.

The second bedroom hosts two single beds and a hinged bunk, bedside table and wardrobe.

The cabins accommodate up to 5 people with a maximum of 4 adults. Sheets, pillows and cases, blankets and towels are supplied for all beds.

The kitchen/dining has an extensively equipped kitchen featuring a full-sized gas range, microwave and two-door fridge/freezer, dining table/chairs and includes cookware, cutlery and crockery and an iron/board.

The living area is cosy with couches, TV, free Austar, DVD player and a CD player.

The bathroom has a corner spa bath, shower, toilet, vanity, complimentary toiletries, and hairdryer.

All cabins are non-smoking with air-conditioning, heating and ceiling fans. A covered deck with outdoor furniture and private garden at each cabin ensures a pleasant outlook.



Deluxe Cabins



The Deluxe Cabins are spacious two bedroom cabins situated centrally in the Park.

The master bedroom contains a queen size bed, bedside tables, dressing table and wardrobe.

The second bedroom has 4 single beds in bunk form, a bedside table and wardrobe.

The cabins accommodate up to 6 people with a maximum of 4 adults. Sheets, pillows and cases, blankets and towels are supplied for all beds.

The bathroom has a double shower or bath/shower, toilet, vanity, complimentary toiletries and hairdryer.

The lounge area contains a couch, TV, free Austar and DVD player for entertainment.

The kitchen/dining has a fully equipped kitchen with full-sized gas range, microwave, and two-door fridge/freezer, dining table/chairs and includes cookware, cutlery and crockery, and an iron/board.

The cabins are non-smoking with reverse-cycle air-conditioning, ceiling fans and include a covered deck with outdoor furniture.





Ph: 02 6646 6210 Email: info@anchorageholidaypark.com.au Web: www.anchorageholidaypark.com.au

Koala Cottage



Koala Cottage is an intimate one-bedroom **pet friendly** Deluxe cabin, situated centrally in the Park. The cabin accommodates max 2 people and 1 medium/large or 2 small dogs.

The master bedroom contains a queen size bed, bedside tables and wardrobe. Sheets, pillows and cases, blankets and towels are supplied.

The bathroom has a shower, toilet, vanity, complimentary toiletries and hairdryer. The kitchen/dining/lounge area is an open plan design and contains a couch, TV, free Astar, DVD player; a fully equipped kitchen with full-sized gas range, microwave, two-door fridge/freezer, dining table/chairs, cookware, cutlery, crockery and an iron/board.



Your well-behaved, house-trained pet is welcome to stay (inside) with you, please ensure he/she stays off **all** furniture, including beds. A bed is provided in the carport for pets preferring to sleep outside. Doggy towels are supplied for muddy paws. A current vaccination certificate must be sent to us **prior** to your arrival and your pet must be on a current flea/tick program.



The cabin is non-smoking, with reverse-cycle air-conditioning, ceiling fans and feature a covered deck with outdoor furniture, a covered carport and a garden shed. A registration card including credit card number is required upon check-in as a security for any breakages or extra cleaning required after your departure.

Tariff for pets is \$10 per pet per night or \$60 per pet per week.

Gecko



Gecko is a compact two-bedroom **pet friendly** Deluxe cabin, situated centrally in the Park. The cabin accommodates a family of up to 4 people and 1 medium or 2 small pets.

The master bedroom contains a queen size bed, bedside tables and wardrobe. Sheets, pillows and cases, blankets and towels are supplied.

The second bedroom contains 2 single beds in bunk form and a wardrobe. Sheets, pillows and cases, blankets and towels are supplied.



The bathroom has a shower, toilet, vanity, complimentary toiletries and hairdryer. The kitchen/dining/lounge area is an open plan design and contains a couch, TV, free Astar, DVD player; a fully equipped kitchen with full-sized gas range, microwave, two-door fridge/freezer, dining table/chairs, cookware, cutlery, crockery and an iron/board.

Your well-behaved, house-trained pet is welcome to stay (inside) with you, please ensure he/she stays off **all** furniture, including beds. A bed is provided in the carport for pets preferring to sleep outside. Doggy towels are supplied for muddy paws. A current vaccination certificate must be sent to us **prior** to your arrival and your pet must be on a current flea/tick program.



The cabin is non-smoking, with reverse-cycle air-conditioning, ceiling fans and a covered carport. A registration card including credit card number is required upon check-in as a security for any breakages or extra cleaning required after your departure.

Tariff for pets is \$10 per pet per night or \$60 per pet per week.



Queen Cabin



Queen Cabins are fully self-contained and accommodate 5 with a maximum of 4 adults.

The master bedroom is separated from the living area, contains a queen size bed, bedside tables, dressing table, wardrobe and ceiling fan. Sheets, pillows and cases, blankets and towels are provided.

There is a walk-thru bunkroom with three bunks. Bedding not supplied but may be hired.

The self-contained kitchen has a microwave, two door fridge/freezer, cook-top, electric frypan, cookware, cutlery, crockery and dining table/chairs.

The living area hosts a couch, TV, free Austar, air-conditioning, ceiling fan, oil heater. The bathroom has shower, toilet and vanity.

The cabins are non-smoking and feature a covered deck with outside furniture.



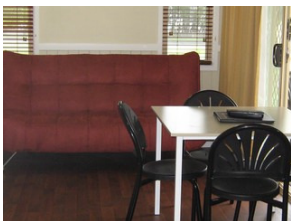
Queen Duplex Cabin



Queen Duplex Cabins are compact, fully self-contained cabins sharing a common wall and satisfy a number of different needs. There are interconnecting doors between the cabins and a maximum of 6 adults allowed if the cabins are booked together.

Both cabins are non-smoking.

Willy Wagtail



Accommodates up to 4 people.

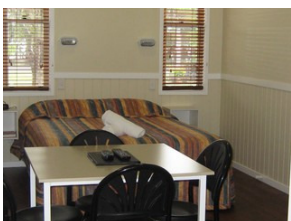
BRM1 – queen size bed, with sheets, pillows and cases, blankets and towels supplied.
BRM2 – double bunks – bedding required (hire available).

The lounge contains couch, TV, free Austar, and DVD player, ceiling fans and reverse-cycle air-conditioning.

The bathroom has a shower, toilet and vanity.

The fully equipped kitchen has full gas range, 2-door fridge/freezer, a microwave and includes cookware, cutlery, crockery and dining table/chairs.

Lorikeet



Accommodates 4 people and is wheelchair accessible via a ramp.

Queen size bed is in the main living room with sheets, pillows and cases, blankets and towels supplied. Bunkroom - double bunks, bedding required (hire available).

The lounge contains couch, TV, free Austar, and DVD player, ceiling fans and reverse-cycle air-conditioning.

The bathroom has a wheelchair accessible shower plus toilet and vanity.

The fully equipped kitchen has full gas range, 2-door fridge/freezer, a microwave and includes cookware, cutlery, crockery and dining table/chairs.



Verandah Cabin



Verandah Cabins are fully self-contained and accommodate 4 people.

The master bed is located at one end of the main room and is a queen size bed with sheets, pillows and cases, blankets and towels supplied.

The bunkroom is accessed through a sliding door from the living room and contains 2 single bunk beds. Bedding is not supplied but may be hired.

The living area is at the other end of the main room and contains a couch, TV, free Austar and a kitchenette with microwave, two-door fridge/freezer, cook-top/grill, cookware, cutlery, crockery and dining tables/chairs.

The bathroom contains a shower, toilet and vanity. The cabins also include an oil heater, upright fan and a covered ground level verandah, with outdoor furniture.

All cabins are non-smoking.

